

Style CPS04 | Two-hole Standoff Hanger



Size Range: 3/4" through 2"

Material: Carbon Steel

Approval: UL and ULC Listed.

Finish: Pre-Galvanized per ASTM A653

Service:

- Hanger and surge restraint for horizontal CPVC, steel, and copper piping when installed on the top, bottom, and side of the supporting structure.
- Guide for vertical CPVC, steel, and copper piping when installed on the side of the supporting structure.
- Horizontal and vertical seismic restraint per NFPA 13-2016 requirements.
- May be installed with concrete, steel structural members, and other structural members with fasteners which comply with the requirements of NFPA 13.



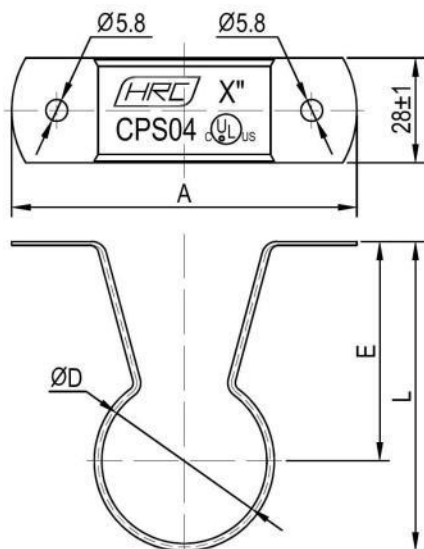
Installation:

- Snap hanger over pipe. If needed, squeeze strap back around pipe.
- CPVC pipe must be allowed to slide freely.
- Secure hanger to mounting surface with screws provided.

Features:

- Beveled edge design helps protect the CPVC pipe from any rough surface and eliminates pipe abrasion.
- Easily attaches to wood structure with #10 x 1" hex washer head self-threading screw supplied. No pre-drilling required.
- Bottom of pipe is offset 11/2" from the structure. Eliminates wooden spacer blocks.

Technical Data



X"	D ± 1(mm)	A ± 2(mm)	E ± 1(mm)	L ± 2(mm)
3/4"	28	92	51	67
1"	35	94	54.5	74
1 1/4"	44	102	58.5	82.5
1 1/2"	50	108	61.5	88.5
2"	62	122	67.5	100.5

