

Style CPS03 | Two-hole 90° Side Mount Strap



Size Range: 3/4" through 2"

Material: Carbon Steel

Approval: UL and ULC Listed.

Finish: Pre-Galvanized per ASTM A653

Service: Hanger for CPVC pipe in the horizontal position on the bottom of structural wood beams and Steel 20 Ga. (min.). Can be used as a restrainer, only in Steel 20 Ga. (min.). During installation, adjust hanger mounting flanges such that pipe contacts both mounting surface and hanger, minimizing vertical pipe movement.

Installation:

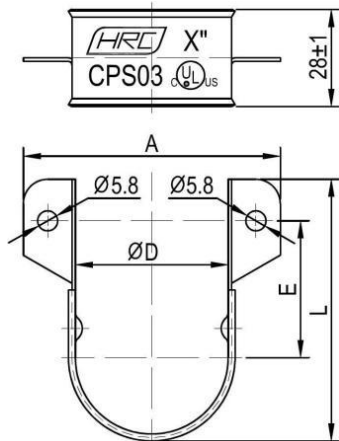
- Snap hanger over pipe.
- Secure hanger to mounting surface with screws provided.
- Do not anchor tightly to mounting surface. Pipe must be allowed to move freely through hanger.
- Steel applications require two (2) #14 x 1" hex washer head self-drilling screws.

Features:

- Beveled edge design helps protect the CPVC pipe from any rough surface.
- Easily attaches to wood structure with #10 x 1" hex washer head self-threading screw supplied with product. No pre-drilling required.



Technical Data



| X" | D ± 1(mm) | A ± 2(mm) | E ± 1(mm) | L ± 2(mm) |
|--------|-----------|-----------|-----------|-----------|
| 3/4" | 28 | 60 | 32 | 60 |
| 1" | 35 | 70 | 35.5 | 67 |
| 1 1/4" | 44 | 76 | 39.5 | 75.5 |
| 1 1/2" | 50 | 82 | 42.5 | 81.5 |
| 2" | 62 | 95 | 48.5 | 93.5 |

